



2024
CCIC

COMMUNITY COLLEGE INNOVATION CHALLENGE

Advancing Student Innovation & Impact

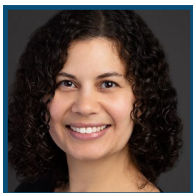


JUDGES BIOGRAPHIES



CHRISTINA HNATOV (Poster Session Judge) is a designer and educator in the Academy for Innovation and Entrepreneurship at the University of Maryland (UMD). She works with students and professionals to build their creative confidence and equip them with tools for approaching big problems in new ways. She is most excited about bringing together interdisciplinary collaborators and helping them uncover ways to make their work more human-centered and innovative. When she isn't teaching or developing curriculum, she can be found facilitating workshops or partnering with groups from the UMD and the public sector to create unique, experiential learning opportunities.

Outside of her responsibilities at UMD, Christina consults with organizations looking to bring more design, innovation, and entrepreneurship into their work. She has a master's degree in public policy, specializing in fostering a culture of innovation in U.S. government agencies and is particularly interested in institutional and structural barriers to innovation and creativity.



ANELISA LAURI (Pitch Judge) is a native New Yorker with a passion and dedication for underrepresented entrepreneurs. After an extensive corporate retail career at Macy's and completing her MBA at Baruch College, she has spent the past decade leading high-quality programs with corporate and non-profit partners with a focus on impact. She loves to create community, build sustainable partnerships, and make connections to support entrepreneurs. She is currently the Senior Program Manager at the Latino Business Action Network based out of Palo Alto; and this is her second year serving as a judge for CCIC. She resides in Orlando, Florida, with her husband and two daughters.



MARK LAWRENCE (Pitch Judge) is a "Big 4" firm-bred visionary leader, innovator, and entrepreneur who is passionate about the enabling power of innovation and entrepreneurship to create new industries and new opportunities that directly impact lives. He believes the right combination of programming, partnership, and community participation will anchor a new kind of economic development engine especially in underserved and underrepresented communities.

Mark is currently the founder of Inncuvate, which is a full-stack entrepreneurship-led economic empowerment enterprise that specializes in creating purpose-built programs and places that cultivates impactful connections between entrepreneurs, corporations, higher education institutions, community development organizations, and government. Through Inncuvate, Mark creates an environment that merges, ideation, invention, incubation, commercialization, and collaboration into local innovation centers that transform the communities where they are located. Mark has led the design and implementation of several innovation hubs, centers, and districts across the county. Mark is also an investor, advisor, and mentor for a few of the Mid-Atlantic region's most promising high growth startups. He is active on the boards of several entrepreneur support organizations and a mentor for several entrepreneur development organizations.

Prior to founding Inncuvate, Mark served as a Senior Manager at Deloitte Consulting LLP, where he led consulting teams and provided trusted advisory services directly to public and private C-Suite executives across various industries from healthcare, aerospace, and defense to telecommunications. Engagements ranged from assessments, feasibility studies, cost/benefit analyses, business cases, mergers and acquisitions, and strategies



2024
CCIC

COMMUNITY COLLEGE INNOVATION CHALLENGE

Advancing Student Innovation & Impact



to full-scale business transformation initiatives. Before that, he served as an Associate at Booz Allen Hamilton where he managed and guided large system implementation project teams in addition to medium and small strategic consulting teams. At Cable & Wireless USA, he was responsible for planning, design, and engineering of telecommunications transmission networks. Mark started his professional career at MCI Communications Corporation (now part of Verizon) provisioning and operating large telecommunications-switched transmission networks.

Mark has a Bachelor of Science in Electrical Engineering Technology from Temple University and a cross-disciplinary Master of Science in Telecommunications from the University of Maryland College Park. He lives in Bowie Maryland, with his wife and two daughters.



HINA MEHTA (Poster Session Judge) currently serves as Director for University Programs for the Commercialization Division. In this role, she participates in the development and execution of the Commonwealth Commercialization Fund (CCF) grant programs and serves as the lead for promoting and managing the CCF's university-focused programs. Hina has extensive experience in research commercialization and technology transfer through patenting and licensing academic innovations. During her tenure as Director of the Office of Technology Transfer at George Mason University, she has successfully engaged with and supported

commercialization-minded research faculty. At Mason, she also mentored faculty-led teams participating in customer discovery programs such as NSF I-Corps and ICAP. Prior to Mason, Hina worked in biomedical research, in strategic consulting and co-founded a startup. Hina is passionate about community service, serves on several innovation and entrepreneurship committees, and volunteers for nonprofit community organizations. She holds a PhD in Neuroscience from the Indian Institute of Chemical Biology, and an MBA from the University of Maryland.



LINDA K. MOLNAR (Poster Session Judge) is a scientist and entrepreneur with more than 20 years of experience in the life science and chemical industries, integrating her scientific research and engineering background with commercialization for startups, and international, government, and business environments. Currently, Linda is a Program Director for the NSF Convergence Accelerator Program in the Office of Integrative Activities at the U.S. National Science Foundation (NSF). The Convergence Accelerator is a relatively new organizational structure and activity within the NSF, designed to accelerate the transition of use-inspired convergence

research into practice in areas of national importance. A guiding rationale of the Convergence Accelerator is that to achieve progress on scientific and societal challenges it is necessary to develop teams that can share expertise across research fields as well as with multiple partners and stakeholders, including the ultimate users of the research products. Previously, Linda was a Program Director in the NSF Engineering Directorate in the Division of Industrial Innovation and Partnerships where she managed a portfolio of Phase I and Phase II SBIR/STTR grants. She also served on the Working Group for the NSF Emerging Frontiers in Research and Innovation program (EFRI), which provides critical, strategic support of fundamental discovery at the frontiers of engineering research and education. Prior to joining NSF, she was co-founder and CEO of Simpatica Medicine, Inc., an artificial intelligence precision medicine company based in San Francisco, California. Linda founded and worked with life science startup companies from many universities. She has also provided strategic consultancy to venture capital firms, public companies, non-profit institutes, and the federal government. Her background includes positions as Managing Director in the Life Sciences Merchant Banking group and Venture Group at Burrill & Company, Executive in Residence at Momentum Biosciences, Program Officer for the National Cancer Institute in the Office of the Director (Center for Strategic Scientific Initiatives), and research and business development roles at Caliper Life Sciences, NASA Ames Research Center, and Rohm & Haas Co. Linda completed the University of Pennsylvania's Wharton Executive Management Program and holds a PhD from the Program in Polymer Science and Technology (Materials Science and Chemical Engineering) from Massachusetts Institute of Technology and a BS in Chemistry (Biology) from the University of Pittsburgh (magna cum laude).



2024
CCIC

COMMUNITY COLLEGE INNOVATION CHALLENGE

Advancing Student Innovation & Impact



SUSAN RUNDELL SINGER (Pitch Judge), is an experienced national and institutional leader in higher education, uplifting the value of a liberal arts education. She is St. Olaf College's president and was Vice President for Academic Affairs and Provost at Rollins College. Previously, she led the Division of Undergraduate Education at the National Science Foundation (NSF) and was the Laurence McKinley Gould Professor of Biology at Carleton College, where she directed the Perlman Center for Learning and Teaching. Recruited to NSF, she was charged with implementing holistic, evidence-informed approaches to increase the persistence and success of all undergraduates. She led 14 federal agencies in achieving the undergraduate goals of the first Federal STEM Education 5-year Strategic Plan, including producing one million more STEM graduates by 2018. Her work integrates higher education and science aimed at improving undergraduate education at scale. Her scholarship focuses on partnerships and networks of organizations collaboratively advancing undergraduate STEM education, with an emphasis on diversity, equity, inclusion, and belonging. Equitable and excellent undergraduate education is a signature element of her successes at Carleton, NSF, national organizations, Rollins, and St. Olaf, enhanced by a strong track record with partnerships and fundraising. An American Association for the Advancement of Science (AAAS) Fellow, and Senior Scholar for the Association of American Universities, Susan has received national education awards. She chairs the National Academies of Science, Engineering, and Medicine (NASEM) Board on Science Education. She chaired several NASEM studies, including Discipline-based Education Research. Her Ph.D. is in Biology from Rensselaer Polytechnic Institute.



CHRIS SUTTON (Poster Session Judge) is passionate about addressing the nation's skills gap. Chris is a leader within Booz Allen's civil business unit and leads projects that focus on strategy, technology modernization, and change management at the U.S. Department of Labor's Employment and Training Administration (ETA), specifically at the Office of Apprenticeship and the Office of Job Corps. Chris holds a MA in Public Policy from the John F. Kennedy School of Government at Harvard University and a BA in Foreign Affairs from the University of Virginia.